

# Telehealth

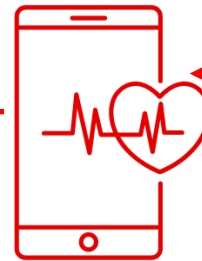
Powered by: **Mobility eXchange**

**Mobility Exchange Telehealth services provide you with the ability to deliver immediate care while minimizing the constraints of location.**

“Telehealth” is now more commonly used as it describes the wide range of diagnosis and management, education and other related fields of health care.

## Challenge:

It is an inescapable fact that successful healthcare of the future will have the ability to engage and care for patients at all times; before, during and after visiting with a doctor.



## What's Included:

- Secure customer facing device (Or secure environment created for BYOD)
  - Locked down with Telehealth system
- HIPAA compliant software to include RPM, Telemedicine, and EMR integration
- Assistance with implementation, training, end user support and device management
- A single fixed monthly payment



## Benefits:

- Increase revenue by reducing visit time averages
- Cut down on no-shows and improve practice efficiency
- Decrease emergency visits by monitoring patients from their home
- NIST 800-53, HIPAA & PCI compliant

**Telemedicine shows us that the future of healthcare can expand outside of the traditional brick and mortar environments.**

Contact: Ron Patterson

Email: [Ron@mobilityexchange.net](mailto:Ron@mobilityexchange.net) Phone: (949)-527-6356 EXT 410 Web: [MobilityExchange](http://MobilityExchange.com)



# Turnkey Telehealth

Powered by: **Mobility eXchange**

With increased federal funding of \$171 million dollars—Telehealth can now be expanded to rural communities under your Healthcare Brand. Reducing or containing the cost of healthcare is one of the most important reasons for funding and adopting telehealth technologies. Telemedicine has been shown to reduce the cost of health care and increase efficiency through better management of chronic diseases, shared health professional staffing, reduced travel times, and fewer or shorter hospital stays.

## Secure Live Video:

Live video is a two-way interaction between a person (patient, caregiver, or Provider) and provider using audiovisual telecommunications technology. This type of service is also referred to “real-time” and may serve as a substitute for an in-person encounter, when it’s not available.



## Remote Patient Monitoring (RPM):

Remote Patient Monitoring (RPM) uses digital technologies to collect medical and other forms of health data from individuals in one location and electronically transmit that information securely to health care providers EMR system.



## Store-and-forward:

Store-and-forward technologies allow for the electronic transmission of medical information, such as digital images, documents, and pre-recorded videos through secure email communication.

## Mobile Health:

Mobile health or Mhealth, a relatively new and rapidly evolving aspect of technology-enabled health care, is the provision of health care services and personal health data via mobile devices.

## Mediik Health System:

Brings all customer-facing software together in a easy to use secure platform. Mediik can also be used to disperse relevant information to the patient through articles or video content.



**Telemedicine shows us that the future of healthcare can expand outside of the traditional brick and mortar environments.**

Contact: Ron Patterson

Email: [Ron@mobilityexchange.net](mailto:Ron@mobilityexchange.net) Phone: (949)-527-6356 EXT 410 Web: [Mobility.Exchange](http://Mobility.Exchange)

