

# M.P.E.R.S.

## Mobile Emergency Response System

Powered by: **Mobility eXchange**

Whether you are involved in executive protection, campus safety, or manage teams of mobile "lone workers", a fundamental requirement exists to keep track of people and ensure their safety as they go about their day. Mobility Exchange offers a highly secure, software-based emergency notification system that provides a safety net.



### Real-Time Location

Latitude, longitude and altitude sent automatically for near real time tracking



### Panic Signaling

Overt, or covert: A simple swipe on the user interface or pulling the headphone jack out of the smartphone puts Beacon into a panic state.



### Secure

All information transmitted using military-grade encryption.



### Listen Live

When used with Command Center, emergency staff may "listen live" once panic mode is activated.



### Encrypted Chat

Beacon user may send or receive secure messages when unable to verbally communicate.



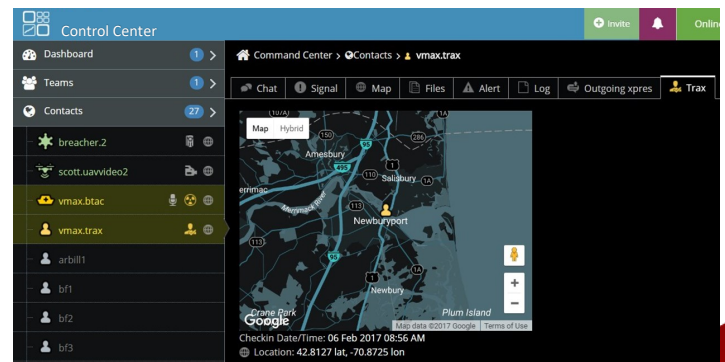
### Camera Auto-fire

Beacon can be configured to send photos at a periodic interval from front and rear cameras and have the images sent to designated monitoring services.

### Control Center:

A secure web based portal that gives the user the ability to track, page, message and organize teams for effective communication.

- One portal to control multiple teams or individuals
- Real time GPS tracking of team members
- Monitor teams and track Panic Signaling



Contact: Ron Patterson

Email: [Ron@mobilityexchange.net](mailto:Ron@mobilityexchange.net) Phone: (949)-527-6356 EXT 410 Web: [Mobility.Exchange](http://Mobility.Exchange)