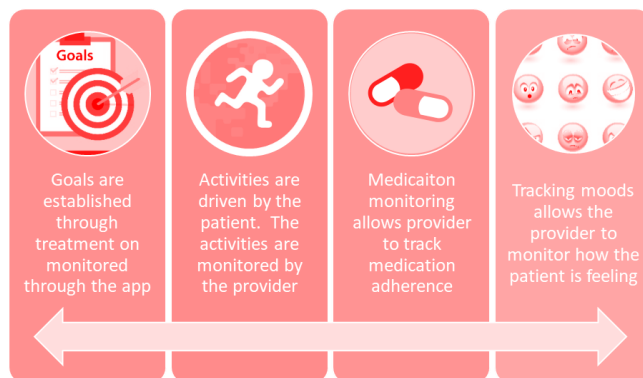


Digital Health

Powered by: **Mobility eXchange**

Digital health is the convergence of digital technologies with health, healthcare, living, and society to enhance the efficiency of healthcare delivery while making medicine more personalized and precise.

The outcome of the Digital Health data collected will aid in early disease prediction which saves both time and system costs. Digital health will allow patients to make informed decisions based on value by comparing quality and pricing of providers.



What's Included:

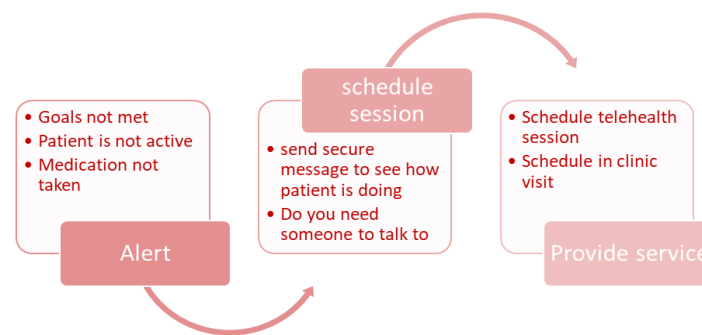
- Medication logs
- Patient scheduling and appointment reminders
- Medication logs which will identify what medication is being taken from Behavior Health and Physical Health providers
- Tracking and logging visits with primary care physician
- E-Forms which can be completed, e-signed and routed back to provider
- Data integration for wearables
- Easy to use Dashboard and reporting environment

Optional Features:

- Locked down device and network
- Customizable device management portal
- Protection from device damage with MobilityCare

Benefit:

- Decrease in hospitalizations and ER visits
- Improved care coordination and improved access to care
- Expansion of services and billable hours
- Simple Dashboard for tracking and logging patient data



Digital innovations will aid in various places. From cutting long-term costs of healthcare, to providing real-time data and connections between a patient and healthcare provider, this innovation will allow us to better track, manage and improve the quality of care for ourselves, as well as our loved ones.

